



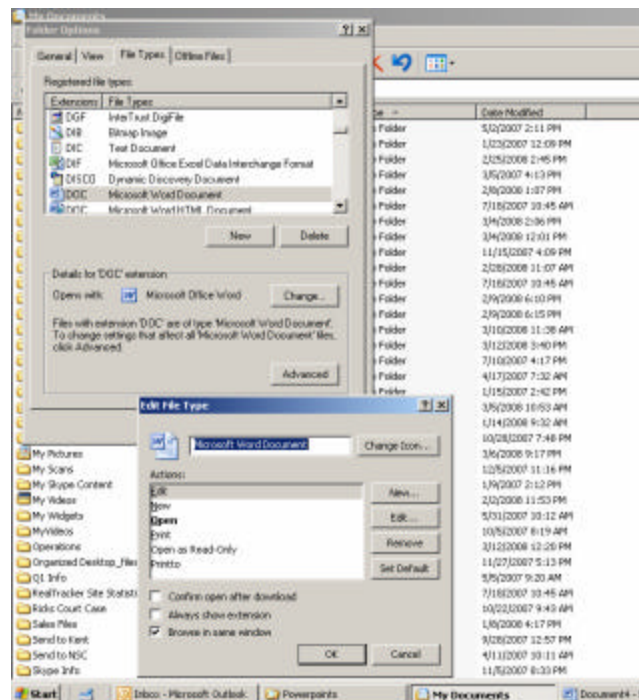
## LABTrack Tech Note 08-010 Internet Explorer / File Type Settings Needed for Embedded Office Files

Applicable to LABTrack version 2.0 and later, all editions

If the LABTrack software is configured to embed Word, Excel and other Microsoft Office files in IFrames – then a configuration change may be needed at the users PC to properly render these files. This document lists the step needed make this configuration change.

Please note these instructions are based upon Windows XP and Internet Explorer 5.5. Configuring later versions may require slightly different steps.

1. Start Windows Explorer or My Documents from the Start button.
2. Pull down the Tools men and select Folder Options.
3. Click on the File Types tab.
4. In the list of file types scroll down and select the DOC (Word) or XLS (Excel) file type as is needed.
5. Click on the Advanced button.
6. Uncheck the 'Confirm open after download' checkbox.
7. Check the 'Browse in Same Window' checkbox.
8. Click on OK to apply the changes.



*Screen capture showing proper settings for Word docs.*